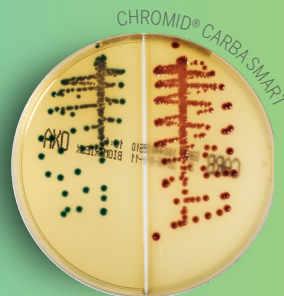
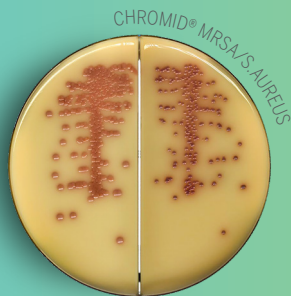
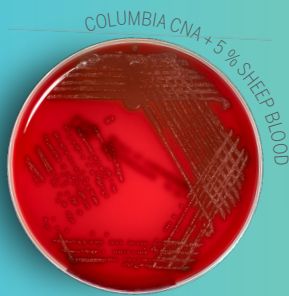
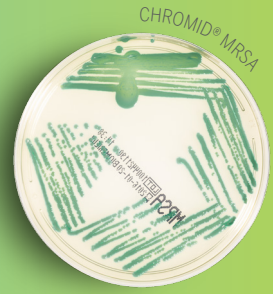
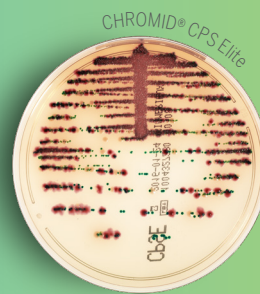


CULTURE MEDIA CATALOG

SAMPLES. PATHOGENS. DECISIONS.

CULTURE OF CONFIDENCE



CULTURE OF INNOVATION

Dear reader,

What are your daily microbiology lab challenges?

Being asked to do more with less? Feeling the pressure to offer increasingly rapid results in an evolving landscape including antimicrobial resistance and sepsis? Juggling daily operations management while ensuring rapid, reliable and cost-effective identification (ID) and antimicrobial susceptibility testing (AST) results to impact patient care?

Leverage **culture media that you can count on for rapid, reliable and accurate results** that enhance your workflow and let your lab team focus on value-added tasks. Confidently deliver accurate, pertinent ID and AST information to clinicians as quickly as possible, impacting **appropriate patient management and antimicrobial stewardship (AMS)**.

This catalog shows you how you can do this with our complete Culture Media offer – whether you regularly use bioMérieux Culture Media or are discovering our range. We hope you find it a useful overview and quick go-to guide covering all your Culture Media needs. And of course, we are always at your disposal for any questions.

- Your bioMérieux Culture Media team

OVERVIEW

CHROMOGENIC & HIGH MEDICAL VALUE MEDIA	3-8
BI-PLATES	9-10
BLOOD AGAR	13-15
CONVENTIONAL MEDIA	17-20
MEDIA DESIGNED FOR AST BY DIFFUSION METHOD	21
ATMOSPHERE GENERATORS FOR FASTIDIOUS BACTERIA	22
TUBES AND TRANSPORT MEDIA	24-26
ENVIRONMENTAL CONTROL SOLUTION	27-28

Product availability varies by country. Consult your local bioMérieux sales representative. Please refer to the product Instructions For Use for detailed information on each product.

ANTIMICROBIAL STEWARDSHIP

Future generations are counting on us to curb the rise of antimicrobial resistance (AMR) and preserve antimicrobial efficacy through appropriate use of antimicrobial drugs. AMS programs aim to limit over-prescription while ensuring that patients benefit from effective antibiotic treatments.

Put diagnostics at the heart of antimicrobial stewardship to help drive informed therapy decisions from antibiotic initiation to optimization and discontinuation. bioMérieux is your trusted partner, supporting AMS through education, services and diagnostic solutions.

BIOMÉRIEUX'S COMMITMENT

Our culture of innovation makes us a leader on the cutting edge of microbiology diagnostics. Based on your laboratory challenges and because of our strong focus on research and development, we are dedicated to continually bring you novel approaches and technologies. Our advanced solutions for infectious disease diagnostics provide high medical value information to help optimize therapeutic decision-making for better patient care.



ICONS AND THEIR MEANING



DIRECT ID

Isolation and accurate identification of pathogenic microorganisms.



MDRO

Culture media for multi-drug resistant organisms (MDRO) screening to fight Antimicrobial Resistance and Healthcare Associated Infections (HAI).



AMS SOLUTION

Part of the bioMérieux AMS solution to fight Antimicrobial Resistance (AMR).



CHROMOGENIC CONVERSION

CHROMID® alternative for conventional media.



Patented chromogenic media for rapid, reliable culture & identification for recovery of high prevalence clinically-relevant pathogens.

The innovative and extensive CHROMID® range of chromogenic media is the easy way to rapidly and reliably detect and identify microorganisms for faster/direct ID of pathogens and MDRO. The intensity and specificity of the colors of CHROMID® make identification and results clear to see, even with mixed cultures.

CHROMID® brings value in your lab:

- Easy to read with color intensity and specificity
- Sensitivity and specificity for reliable results
- Fast and actionable results
- Save time with less need for confirmation testing and subculture steps

CHROMID® is easy to adopt

Your lab evolves and so does our culture media offer. Some of your testing needs can be addressed with our CHROMID® chromogenic range in place of conventional media. Easily transition from conventional pre-poured culture media to CHROMID® from the supplier you know and trust.

- Fast lab staff training with tutorials and reading guides
- Easier reading with intensity and specificity of colors
- Faster/direct ID and MDRO detection
- Even mixed cultures are more identifiable than with conventional media
- See icon to recognize your CHROMID® alternatives



Accelerate your results with EARLY READING

Through image processing and interpretation integrated into WASPLab® (automated specimen processing) and PhenoMATRIX®, you can use the early reading protocol in 12 hours for urine sample culture only validated with CHROMID® CPS Elite media.

NTM Elite AGAR TOP SELLER

Selective agar plate intended for the isolation of non-tuberculous mycobacteria (such as *Mycobacterium avium* complex, *Mycobacteroides abscessus*, *Mycobacteroides chelonae* complex, and *Mycobacterium goodii*) from sputum samples from patients with cystic fibrosis and from respiratory specimens from patients without cystic fibrosis.

Reference	Kit/Format
423144	20 x 90 mm plates

CHROMID® MRSA SMART TOP SELLER

Chromogenic medium for the screening of methicillin-resistant *Staphylococcus aureus* (MRSA).

Reference	Kit/Format
413050	20 x 90 mm plates
413051	100 x 90 mm plates



CHROMID® CARBA SMART TOP SELLER

Selective chromogenic medium for the screening of Carbapenemase-Producing *Enterobacterales* (CPE) including OXA-48 type.

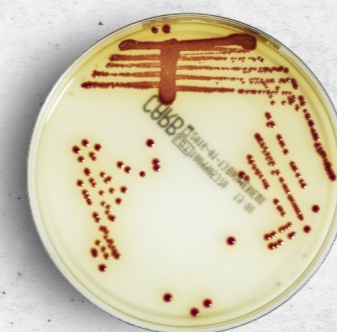
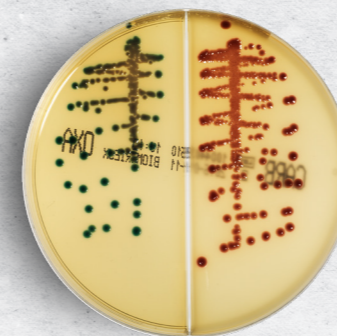
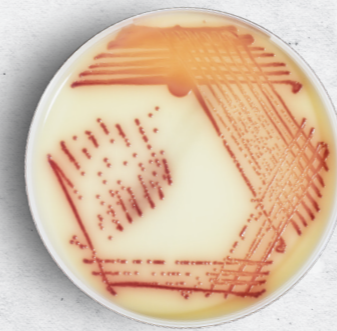
Reference	Kit/Format
414685	20 x 90 mm bi-plates



CHROMID® CARBA TOP SELLER

Selective chromogenic medium for the screening of Carbapenemase-Producing *Enterobacterales* (CPE) except OXA-48 type.

Reference	Kit/Format
43861	20 x 90 mm plates





CHROMID® OXA 48 TOP SELLER

Selective chromogenic medium for the screening of OXA-48 type Carbapenemase-Producing *Enterobacterales* (CPE).

Reference	Kit/Format
414011	20 x 90 mm plates



CHROMID® MRSA TOP SELLER

Chromogenic medium for the screening of methicillin-resistant *Staphylococcus aureus* (MRSA).

Reference	Kit/Format
43451	20 x 90 mm plates
43459	100 x 90 mm plates



CHROMID® VRE TOP SELLER

Selective chromogenic medium for the detection and differentiation of *Enterococcus faecium* and *Enterococcus faecalis* showing acquired vancomycin resistance.

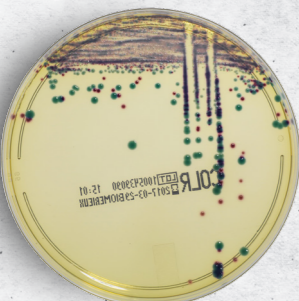
Reference	Kit/Format
43004	20 x 90 mm plates



CHROMID® ESBL TOP SELLER

Selective chromogenic medium for the screening of Extended Spectrum β -Lactamase-producing *Enterobacterales* (ESBL).

Reference	Kit/Format
43481	20 x 90 mm plates



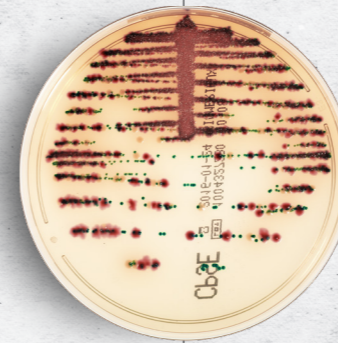
CHROMID® COLISTIN R TOP SELLER

Selective chromogenic medium for the screening of colistin-resistant Gram-negative bacteria (clinical and veterinary samples) and qualitative resistance detection to colistin from isolated colonies.

Reference	Kit/Format
421170	20 x 90 mm plates



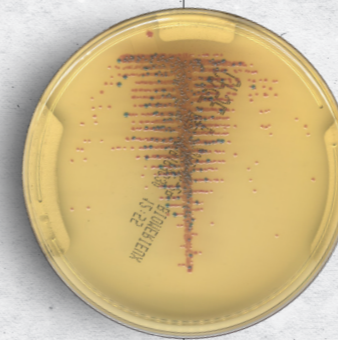
CHROMID® CPS Elite



CHROMID® CPS Elite TRANSLUCENT TOP SELLER

Isolation, enumeration, direct identification of *E. coli* and presumptive identification of urinary tract infection organisms. Two weeks room temperature storage.

Reference	Kit/Format
418284	20 x 90 mm plates
416172	100 x 90 mm plates



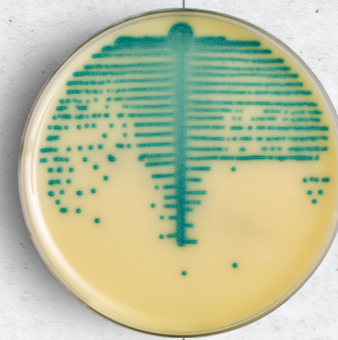
CHROMID® CPS Elite EARLY READING



Through image processing & interpretation integrated into the WASPLab® (automated specimen processing) and PhenoMATRIX®, you can use the early reading protocol in 12 hours for urine sample culture only validated with CHROMID® CPS Elite media.

Reference

Validated on CHROMID® CPS Elite Translucent (418284 or 416172).



CHROMID® CPS Elite OPAQUE

Isolation, enumeration, direct identification of *E. coli* and presumptive identification of urinary tract infection organisms. Two weeks room temperature storage.

Reference	Kit/Format
418206	20 x 90 mm plates
416173	100 x 90 mm plates



CHROMID® CPS Elite



CHROMID® STREPTO B TOP SELLER

Selective chromogenic medium for the screening of group B streptococci (*S. agalactiae*), including non-hemolytic strains. Incubation in aerobic conditions.

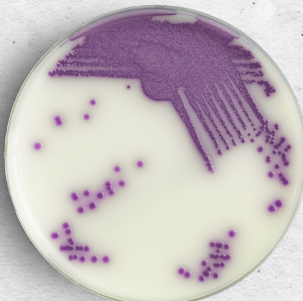
Reference	Kit/Format
43461	20 x 90 mm plates



CHROMID® CANDIDA TOP SELLER

Chromogenic medium for the selective isolation of yeasts and the direct identification of *Candida albicans*. Validated for reading at 24h.

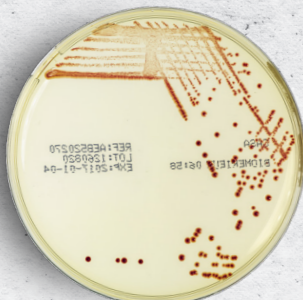
Reference	Kit/Format
43631	20 x 90 mm plates
43639	100 x 90 mm plates



CHROMID® SALMONELLA Elite TOP SELLER

Chromogenic medium for the selective isolation and identification of *Salmonella* in human specimens.

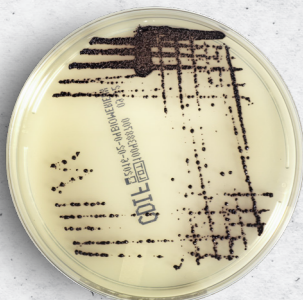
Reference	Kit/Format
412108	20 x 90 mm plates



CASA™ TOP SELLER

Selective medium for the detection and enumeration of *Campylobacter*.

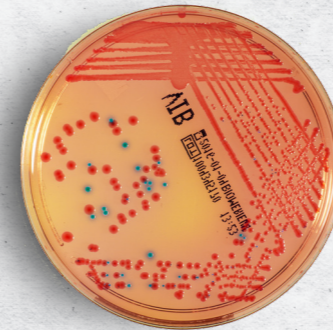
Reference	Kit/Format
AEB520270	20 x 90 mm plates



CHROMID® C. DIFFICILE TOP SELLER

Chromogenic medium for the detection and identification of *Clostridioides difficile*. Validated for reading at 24h.

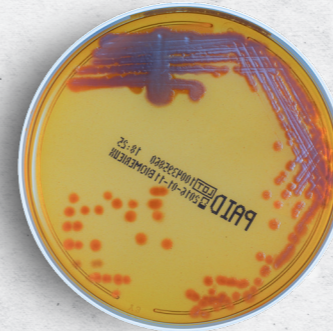
Reference	Kit/Format
43871	20 x 90 mm plates



CHROMID® VIBRIO

Chromogenic medium for the selective isolation of *Vibrio* and presumptive identification of *V. cholerae* and *V. parahaemolyticus*.

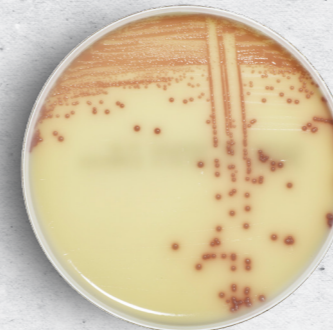
Reference	Kit/Format
43762	20 x 90 mm plates



CHROMID® P. AERUGINOSA TOP SELLER

Chromogenic medium for the direct identification of *Pseudomonas aeruginosa*.

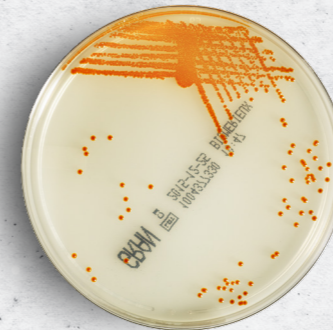
Reference	Kit/Format
43462	20 x 90 mm plates



CHROMID® S. AUREUS Elite TOP SELLER

Chromogenic medium for the selective isolation and the direct identification of *S. aureus*.

Reference	Kit/Format
419042	20 x 90 mm plates



GRANADA™

Selective medium for the screening and direct identification of group B streptococci (*S. agalactiae*).

Reference	Kit/Format
43712	20 x 90 mm plates



CHROMID® STREPTO B

BI-PLATES

Bi-plate range offers smart combinations covering most routine specimen types

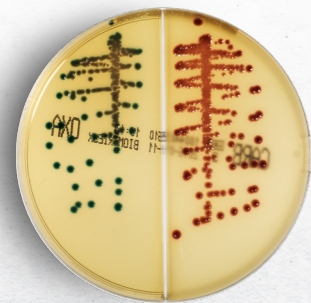
The chromogenic culture media bi-plate range brings together two relevant, complementary media in one plate for improved pathogen detection and higher medical value with more information in one test. Additionally, many of our bi-plates enable MDRO detection.

Optimize your workflow:

- One plate, two complementary answers
- Fewer steps, less handling, streamlined workflow
- Saves space by reducing storage/incubation space and decreasing waste volume

Maximize efficiency and standardization with automation:

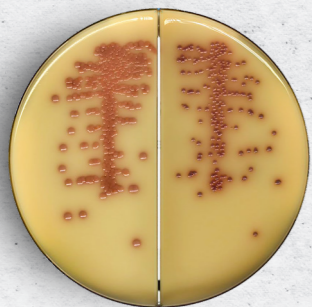
- Fully compatible with WASP® specimen processor and WASPLab® system
- Simultaneous streaking on both sides with a twin loop
- PhenoMATRIX® to read, interpret and sort to treat more samples faster



CHROMID® CARBA SMART TOP SELLER

Selective chromogenic medium for the screening of Carbapenemase-Producing *Enterobacterales* (CPE) including OXA-48 type.

Reference	Kit/Format
414685	20 x 90 mm bi-plates



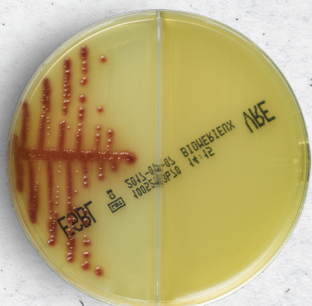
CHROMID® SMART MRSA/S.AUREUS TOP SELLER

Combination of chromogenic medium for the screening of methicillin-resistant *Staphylococcus aureus* (MRSA) + isolation and direct identification of *S. aureus*.

Reference	Kit/Format
419398*	20 x 90 mm bi-plates



*available from April 2024



CHROMID® ESBL/CHROMID® VRE TOP SELLER

Combination of chromogenic medium for the screening of Extended Spectrum β -Lactamase-producing *Enterobacterales* (ESBL) and the detection and differentiation of *E. faecium* & *E. faecalis* showing acquired vancomycin resistance (VRE).

Reference	Kit/Format
43470	20 x 90 mm bi-plates

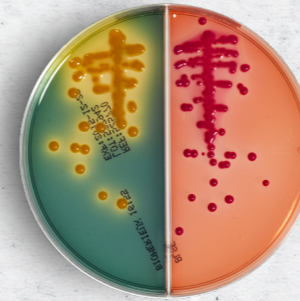


BI-PLATES

BLSE

Selective isolation medium for screening of ESBL-producing *Enterobacterales*.

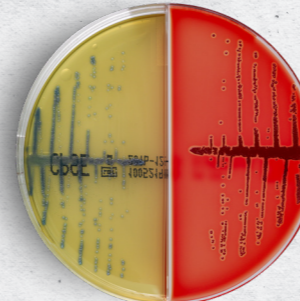
Reference	Kit/Format
AEB525770	20 x 90 mm bi-plates



CHROMID® CPS Elite/COL CNA + 5% SHEEP BLOOD

Combination of chromogenic media for direct identification of *E. coli* and presumptive identification of urinary tract infection organisms + selective isolation of Gram-positive bacteria and determination of hemolysis.

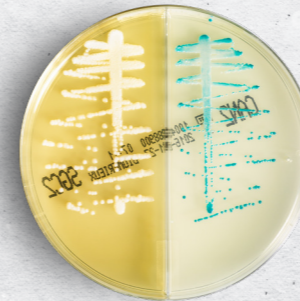
Reference	Kit/Format
418229	20 x 90 mm bi-plates



CHROMID® CANDIDA/SABOURAUD GENTAMICIN CHLORAMPHENICOL 2 TOP SELLER

Chromogenic medium for the selective isolation of yeasts and direct identification of *Candida albicans* from 24h. Selective isolation of yeasts and molds.

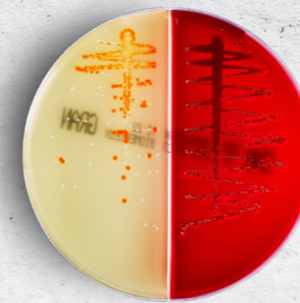
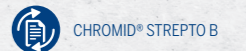
Reference	Kit/Format
43464	20 x 90 mm bi-plates



GRANADA™/COL CNA + 5% SHEEP BLOOD

Combination of selective medium for the screening and direct identification of group B *Streptococci* (*S. agalactiae*) + selective isolation of Gram-positive bacteria with hemolysis detection.

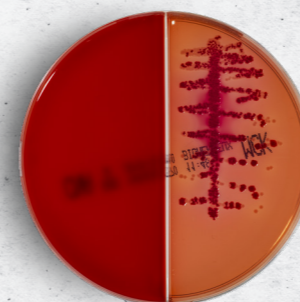
Reference	Kit/Format
43467	20 x 90 mm bi-plates



MAC CONKEY/COL CNA + 5% SHEEP BLOOD

Combination of selective media for *Enterobacterales* and *E. coli* + selective isolation of Gram-positive bacteria with hemolysis determination.

Reference	Kit/Format
43474	20 x 90 mm bi-plates



CULTURE OF QUALITY

BACKED BY CERTIFICATES AND VALIDATIONS FOR CULTURE MEDIA

QUALITY CONTROL (QC) AND SECURED SUPPLY CHAIN PROCESSES

CONFIDENCE DURING THE ENTIRE VALUE CHAIN

Shelf-life and storage temperature

The stability of many of our culture media is validated with thermal shock validation in a real-life lab situation. It allows storage of 2-4 weeks at room temperature (15-25°C) in daily routine use.

Thermal shock validation

Possible temperature variation accounts during delivery/transportation. Our media are validated using thermal shock simulation sequences. It guarantees the best performance regardless of the shipment conditions.

The hidden part of the quality certificate

Guarantees consistent product quality for batch-to-batch reproducibility and enables your lab to avoid biological controls, e.g. fertility with QC strains and batch-to-batch comparison, before use.

High confidence - proven performance

Instructions for Use (IFU) can be used as proof to mitigate risk analysis within your quality management system. Detailed performances limit the need for heavy validation with biological testing.

Secured supply chain process

A robust supply chain process guarantees the best delivery times, with an optimized residual shelf life at the customer site for each culture media to guarantee lab staff satisfaction.

Fast lab staff training

Easy qualification management with reading guides and tutorials.

UNIQUE CERTIFICATES OF COMPATIBILITY

bioMérieux verifies the compatibility of its culture media with its reagents and systems and issues a validated Certificate of Compatibility, allowing you to gain confidence in compatibility while lightening your workload. You can view and download these certificates at resourcecenter.biomerieux.com.

A FEW EXAMPLES OF OUR QUALITY DOCUMENTATION

REF 416172 / 418284 / 416173 / 418206
chromID CPS ELITE (CPSE and CPSO)

THERMAL SHOCK VALIDATION STATEMENT

Introduction:
 The shelf-life of bioMérieux culture media is based on real-time stability study results. These studies are carried out according to the EN 20669 "Evaluation of stability of in vitro diagnostic reagent" recommendations. These studies are performed during the development of the product, on three batches and include thermal shocks.

Summary of the stability study protocol:
 These studies were performed according to the protocol PCSRDC/MSL R01.

Temperature Storage time

15-20°C	30 d
20-25°C	60 d

Document accepted on: 17 June 2014
 By: JM HOCH, R&D Department and S. TROMMEL, Quality Engineering

THERMAL SHOCK VALIDATION

REF 418284 / 418206 / 416172 / 416173
CHROMID® CPS® Elite agar (CPSE and CPSO)
CERTIFICATE OF COMPATIBILITY WITH BIOMÉRIEUX COMPLEMENTARY TESTS

Additional reagents tested with CHROMID® CPS® Elite agar (CPSE and CPSO) (ref. 418284 / 418206 / 416172 / 416173):

Compatibility studies were performed with the following bioMérieux / COPAN WASP® products:

Identification tests	Susceptibility tests	Other tests	COPAN WASP® products
VITEK® MS	VITEK® 2 AST ON	RAPID® CARBA NP	WASP®
VITEK® 2 GP	VITEK® 2 AST GP	WASP®	WASP®
VITEK® 2 GN	VITEK® 2 AST ST	WASP®	WASP®
VITEK® 2 IT	VITEK® 2 AST IT	WASP®	WASP®
APF® 20 EU	RAPID ATB™ UR EU	WASP®	WASP®
APF® 20 GN	ATB™ UR EU	WASP®	WASP®
APF® 20 E	ATB™ PSE EU	WASP®	WASP®
APF® 20 C	ATB™ STREP EU	WASP®	WASP®
ID 32 C	ATB™ STAPH EU	WASP®	WASP®
ID 32 GN	ATB™ FUNGUS 3	WASP®	WASP®
ID 32 E	ATB™ FUNGUS 3	WASP®	WASP®
RAPID ID 32 E™	ATB™ FUNGUS 3	WASP®	WASP®
RAPID ID 32 E™	ATB™ FUNGUS 3	WASP®	WASP®

COMPATIBILITY WITH ID & AST TESTS

BIOMÉRIEUX
REF 416172 / 416173 / 418206 / 418284
CHROMID® CPS® Elite Agar (CPSE and CPSO)

Intended Use
 Isolation, enumeration, and direct or presumptive identification of urinary tract infection organisms.

Explanation and Principle
 This medium consists of a rich nutritive base containing a variety of peptones and chromogenic substrates. The chromogenic substrates enable the detection of the activity of specific enzymes. The detection of indole is enhanced by the tryptophan present in the agar. The high concentration of agar prevents the swarming of Proteus.

Composition of the Medium

Casein peptone (bovine)	5.0 g
Vegetable peptone	5.0 g
Meat peptone (bovine or porcine)	10.0 g
Catalyzed peptone	1.0 g
L-Tryptophan	2.5 g
Phosphate buffer	1.0 g
Chromogenic substrates (β-glucuronidase, β-galactosidase)	4.0 g
Compound B + C	2.5 g
Agar (vegetal)	20.0 g
Purified water	1 L

GUARANTEED & VALIDATED PERFORMANCES IN IFU

BIOMÉRIEUX
REF 416172
CHROMID® CPS® Elite agar
Certificate of Analysis

Lot: 1010241170

Task(s) / Condition(s) vs **Result(s) / Result(s)** vs **Specifications / Specifications**

Task(s) / Condition(s)	Result(s) / Result(s)	Specifications / Specifications
Appearance	Very pale yellow translucent agar with greenish tint	Greenish yellow to light yellow color with white turbidity
pH	7.4	Between 7.0 and 7.8
Microbiological activity	Conforms / Conforms	Conforms / Specifications
Identification of urinary genera	Conforms / Conforms	Conforms / Specifications
Enterobacteriaceae ATCC 29622	Conforms / Conforms	Conforms / Specifications
Klebsiella pneumoniae ATCC 13637	Conforms / Conforms	Conforms / Specifications
Proteus mirabilis ATCC 12463	Conforms / Conforms	Conforms / Specifications
Enterobacteriaceae ATCC 29612	Conforms / Conforms	Conforms / Specifications
Staphylococcus aureus ATCC 29623	Conforms / Conforms	Conforms / Specifications
Streptococcus agalactiae ATCC 12266	Conforms / Conforms	Conforms / Specifications

GUARANTEING CONSISTENT PRODUCT QUALITY IN QUALITY CERTIFICATES

Blood agar range to support growth of fastidious organisms

- High quality blood agar for standardized hemolysis and easy reading for most bacteria

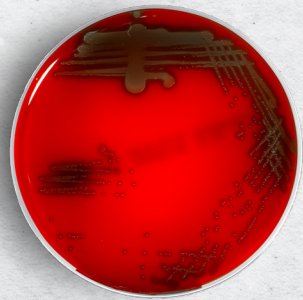


NON-SELECTIVE MEDIA

COLUMBIA + 5% SHEEP BLOOD

Isolation of fastidious bacteria. Detection of hemolysis.

Reference	Kit/Format
43041	20 x 90 mm plates
43049	100 x 90 mm plates

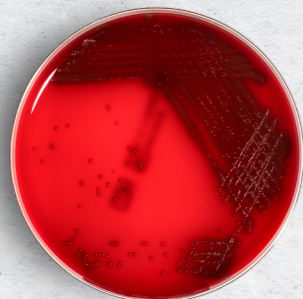


SELECTIVE MEDIA

COLUMBIA CNA + 5% SHEEP BLOOD

Isolation of Gram-positive bacteria. Detection of hemolysis.

Reference	Kit/Format
43071	20 x 90 mm plates
43079	100 x 90 mm plates

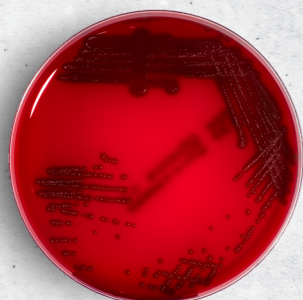


NON-SELECTIVE MEDIA

COLUMBIA + 5% HORSE BLOOD

Isolation of fastidious bacteria. Detection of hemolysis.

Reference	Kit/Format
43050	20 x 90 mm plates

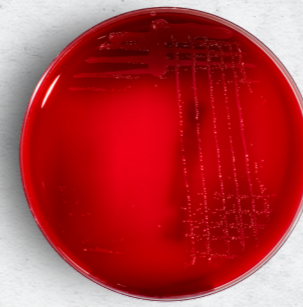


NON-SELECTIVE MEDIA

TRYPCASE SOY + 5% SHEEP BLOOD

Isolation of bacteria. Determination of hemolysis.

Reference	Kit/Format
43001	20 x 90 mm plates
43009	100 x 900 mm plates

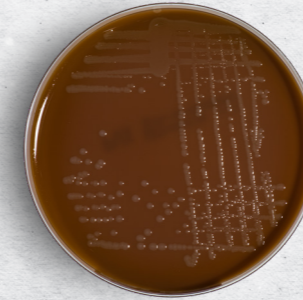


FOR ANAEROBIC BACTERIA

SCHAEDLER + 5% SHEEP BLOOD

Isolation of anaerobic bacteria.

Reference	Kit/Format
43401	20 x 90 mm plates
43279	100 x 90 mm plates

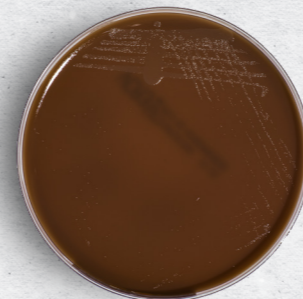


NON-SELECTIVE MEDIA

CHOCOLATE PolyViteX™

Isolation of fastidious bacteria. Two weeks room temperature storage.

Reference	Kit/Format
43101	20 x 90 mm plates
43109	100 x 90 mm plates

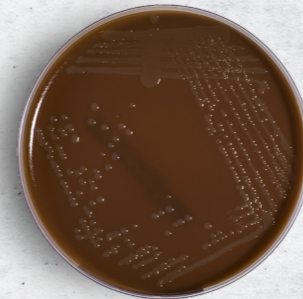


SELECTIVE MEDIA

CHOCOLATE PolyViteX™ VCAT3

Selective isolation of *Neisseria gonorrhoeae* and *Neisseria meningitidis*. Two weeks room temperature storage.

Reference	Kit/Format
43611	20 x 90 mm plates



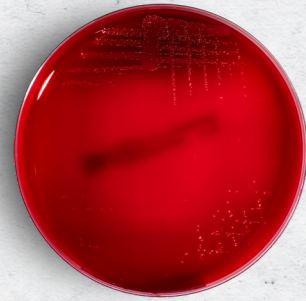
SELECTIVE MEDIA

CHOCOLATE HAEMOPHILUS 2

Selective medium for the isolation of the different *Haemophilus* species.

Reference	Kit/Format
43681	20 x 90 mm plates

BLOOD AGAR

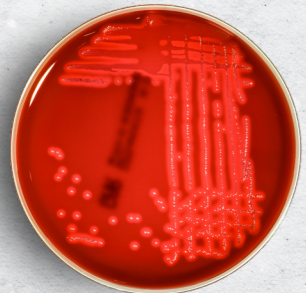


FOR ANAEROBIC BACTERIA

SCHAEDLER NEO.VANC. + 5% SHEEP BLOOD

Selective isolation medium for the detection of anaerobic bacteria *Bacteroides* and *Prevotella*.

Reference	Kit/Format
413194	20 x 90 mm plates

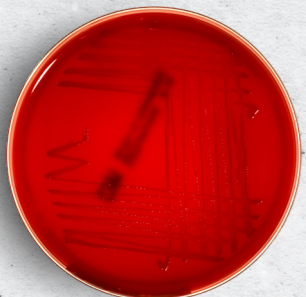


SELECTIVE MEDIA

GARDNERELLA

Selective isolation of *Gardnerella vaginalis*.

Reference	Kit/Format
43411	20 x 90 mm plates

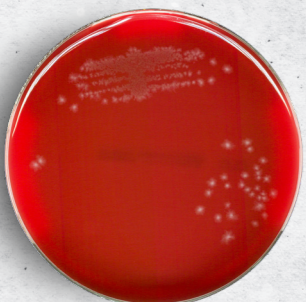


SELECTIVE MEDIA

CAMPYLOSEL

Selective isolation of *Campylobacter* from stool.

Reference	Kit/Format
43361	20 x 90 mm plates



SELECTIVE MEDIA

CLOSTRIDIUM DIFFICILE

Selective isolation of *Clostridioides difficile* in stool samples.

Reference	Kit/Format
43431	20 x 90 mm plates

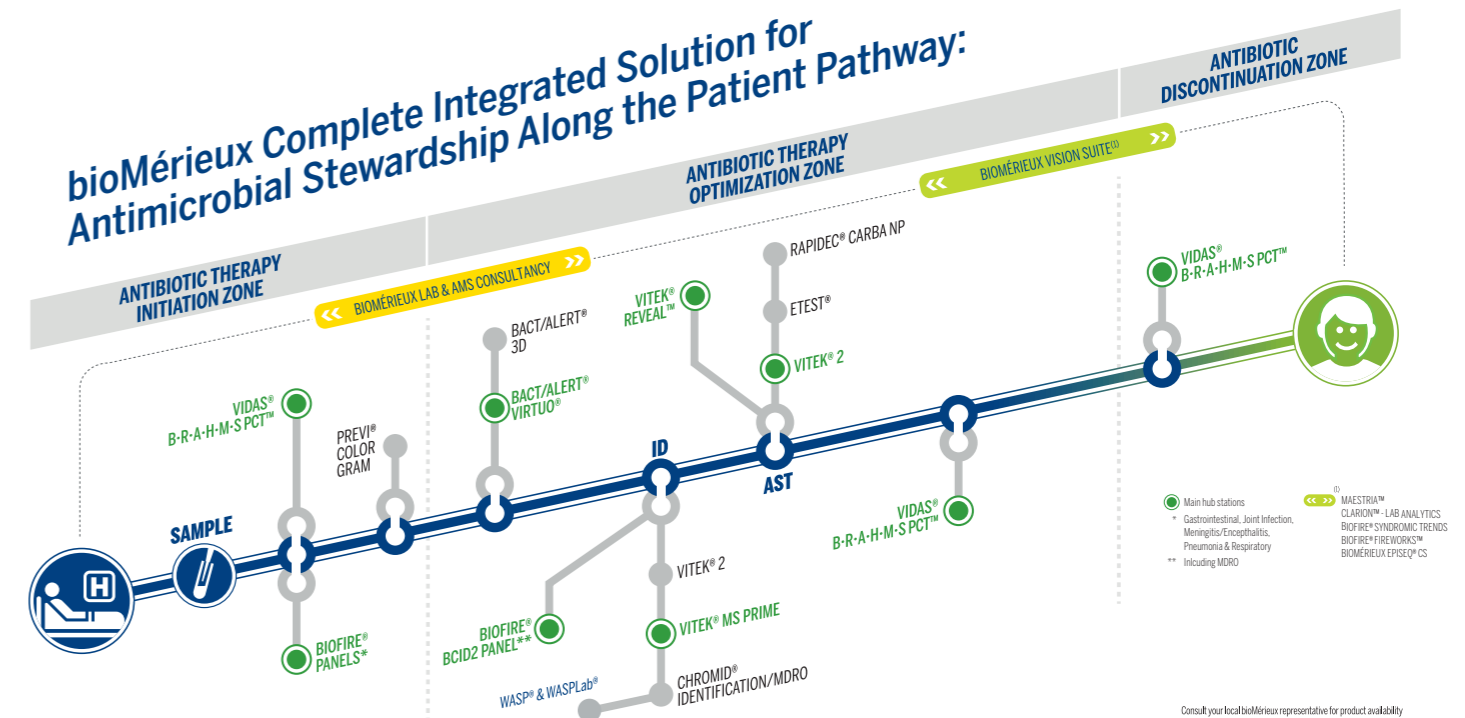


ANTIMICROBIAL RESISTANCE IS THE PROBLEM. ANTIMICROBIAL STEWARDSHIP IS THE SOLUTION.

bioMérieux provides the most complete solution to support AMS initiatives with 80% of our product portfolio dedicated to the fight against AMR.

Our actionable diagnostics paired with complementary advanced analytics, collaborative services and educational modules, enable clinicians to provide earlier, optimized and data-driven therapy for better patient management and a responsible use of antimicrobials.

bioMérieux is the trusted partner that today's healthcare systems need to confidently deliver evidence-based clinical decisions along the entire patient pathway.



80%

OF OUR PRODUCT PORTFOLIO
IS DEDICATED TO THE FIGHT
AGAINST AMR*.

*At least 80% based on EUCAST list and 90% on CLSI cat. A, B, U li

High-quality culture media backed by 60+ years of leadership

The extensive range of pre-poured conventional agar culture media offers high-quality nutritive, selective and differential media for daily routine.

- Quality paired with cost-effectiveness. Flexible for all lab sizes and situations.
- Some media are available in different formats (dehydrated, tube, bottle).
- Certificate of Compatibility with complementary bioMérieux instruments and reagents.

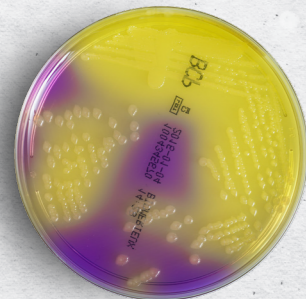


NON-SELECTIVE MEDIA

TRYPCASE SOY

Isolation of non-fastidious microorganisms.

Reference	Kit/Format
43011	20 x 90 mm plates
43019	100 x 90 mm plates

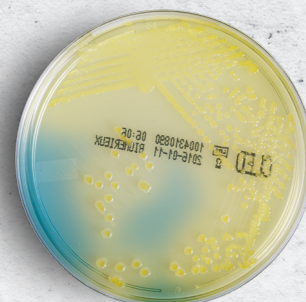


NON-SELECTIVE MEDIA

PURPLE LACTOSE (BCP)

Lactose Agar with Bomocresol Purple for isolation & lactose-fermenting differentiation of all organisms commonly found in specimens of various origin. Four weeks room temperature storage.

Reference	Kit/Format
43021	20 x 90 mm plates

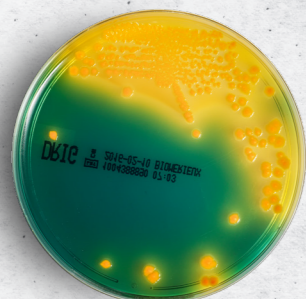


NON-SELECTIVE MEDIA

CLED

Isolation of micro-organisms of the urinary tract. Four weeks room temperature storage.

Reference	Kit/Format
43331	20 x 90 mm plates
43339	100 x 90 mm plates



SELECTIVE MEDIA

DRIGALSKI

Selective isolation of *Enterobacteriales* and other Gram-negative bacteria. Two weeks room temperature storage.

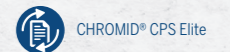
Reference	Kit/Format
43341	20 x 90 mm plates

SELECTIVE MEDIA

MAC CONKEY (with Crystal Violet)

Selective isolation of *Enterobacteriales* and *Escherichia coli*. Two weeks room temperature storage.

Reference	Kit/Format
43141	20 x 90 mm plates
43149	100 x 90 mm plates

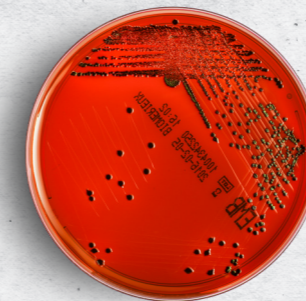


SELECTIVE MEDIA

EOSIN METHYLENE BLUE

Selective isolation and differentiation medium for the detection of *Enterobacteriales* with lactose-fermenting and/or sucrose-fermenting differentiation. Four weeks room temperature storage.

Reference	Kit/Format
43081	20 x 90 mm plates



SELECTIVE MEDIA FOR YEASTS & MOLDS



Selective isolation of yeasts and molds. *Four weeks room temperature storage.

Product name	Reference	Kit/Format
SABOURAUD GENTA CHLORAMPHENICOL 2*	43651	20 x 90 mm plates
SABOURAUD GENTA CHLORAMPHENICOL 2*	43659	100 x 90 mm plates
SABOURAUD DEXTROSE	43555	20 x 90 mm plates
DERMATOPHYTE	43062	20 x 90 mm plates



SELECTIVE MEDIA FOR SALMONELLA & SHIGELLA

Selective isolation of *Salmonella* and *Shigella*. *Two weeks room temperature storage.

Product name	Reference	Kit/Format
HEKTOEN	43111	20 x 90 mm plates
SALMONELLA/SHIGELLA*	43091	20 x 90 mm plates
XLD	43563	20 x 90 mm plates

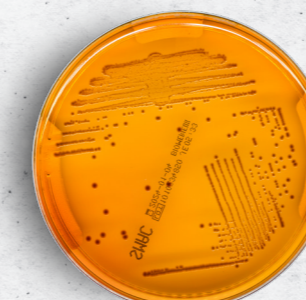


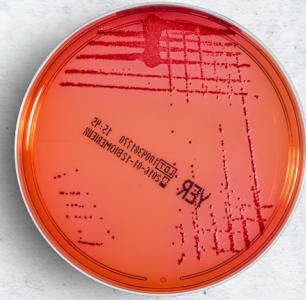
SELECTIVE MEDIA

CT SMAC (MAC CONKEY WITH SORBITOL)

Selective isolation of *Escherichia coli* O157:H7.

Reference	Kit/Format
43391	20 x 90 mm plates





SELECTIVE MEDIA

YERSINIA CIN

Selective isolation of *Yersinia*.

Reference	Kit/Format
43421	20 x 90 mm plates

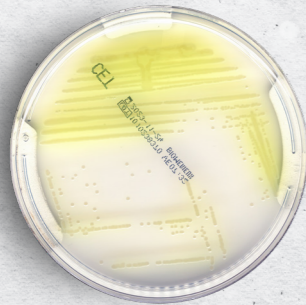


SELECTIVE MEDIA

PYLORI

Selective isolation of *Helicobacter pylori*.

Reference	Kit/Format
413193	20 x 90 mm plates



SELECTIVE MEDIA

CETRIMIDE (CET)

Selective isolation medium for the detection of *Pseudomonas aeruginosa* from specimens of various origins.

Reference	Kit/Format
43565	20 x 90 mm plates

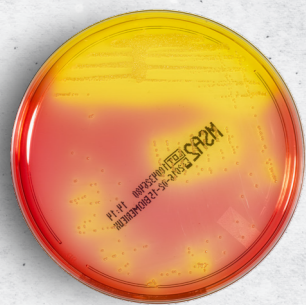


SELECTIVE MEDIA

D-COCCOSEL (DCO)

Selective isolation of enterococci and group D streptococci.

Reference	Kit/Format
43151	20 x 90 mm plates

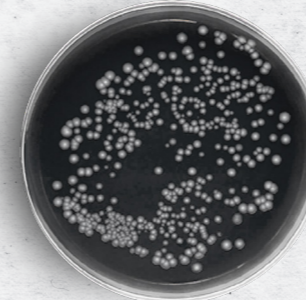


SELECTIVE MEDIA

MANNITOL SALT 2

Selective isolation of *staphylococci*. Four weeks room temperature storage.

Reference	Kit/Format
43671	20 x 90 mm plates

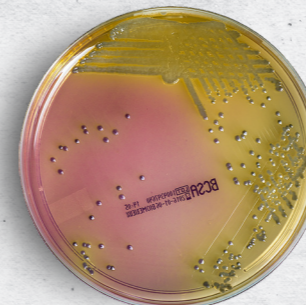


SELECTIVE MEDIA

LEGIONELLA (GVPC) MEDIUM

Selective isolation of *Legionella* in clinical samples.

Reference	Kit/Format
43031	20 x 90 mm plates
43032	100 x 90 mm plates

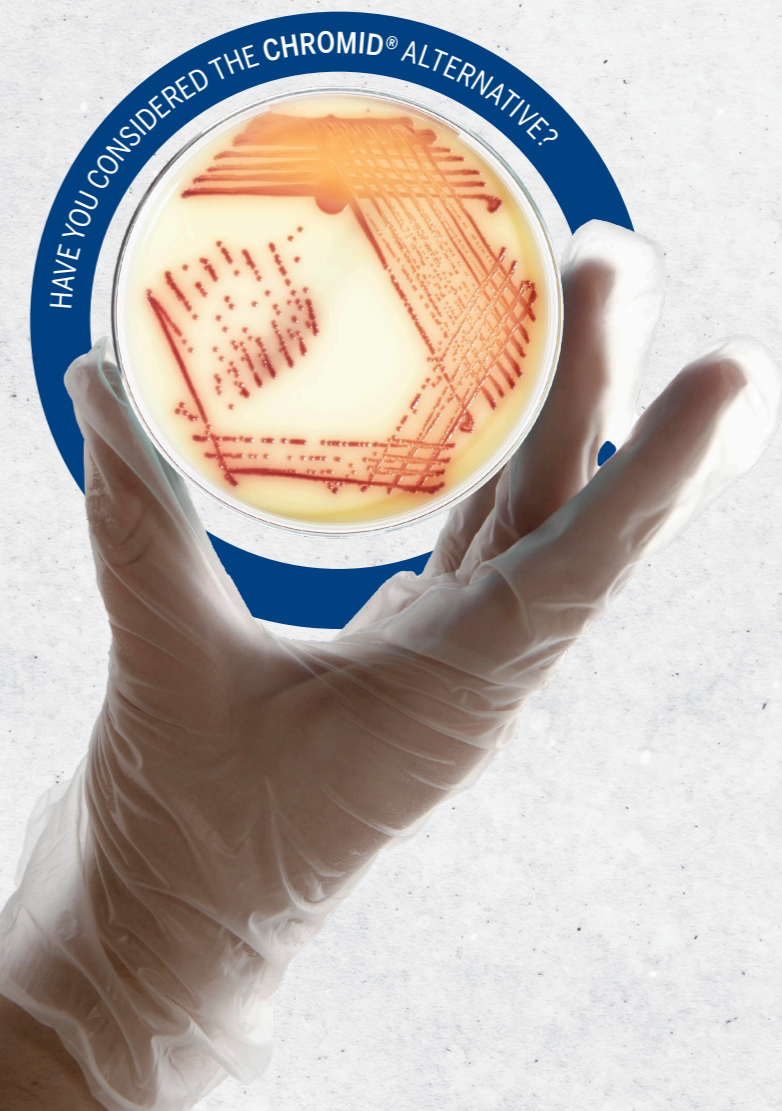


SELECTIVE MEDIA

BCSA

Selective isolation of *Burkholderia cepacia*.

Reference	Kit/Format
33631	20 x 90 mm plates



MEDIA DESIGNED FOR AST BY DIFFUSION METHOD

ATMOSPHERE GENERATORS FOR FASTIDIOUS BACTERIA

VALIDATED WITH ETEST® STRIPS

MUELLER HINTON (MH) FOR AST



FOR NON-FASTIDIOUS BACTERIA

MH E

For AST by disk diffusion and the determination of Minimal Inhibitory Concentrations (MIC) using the ETEST® method.

Reference	Kit/Format
413822	20 x 90 mm plates
413824	100 x 90 mm plates
413825	20 x 120 mm square plates

FOR FASTIDIOUS BACTERIA

MH + 5% SHEEP BLOOD

For AST by disk diffusion for strains requiring blood for their growth.

Reference	Kit/Format
43321	20 x 90 mm plates

FOR ESBL CONFIRMATION

MH CLOXA (MHC)

For the confirmation of ESBL-producing bacteria.

Reference	Kit/Format
421989	20 x 90 mm plates
AEB120291	10 x 120 mm square plates

FOR FASTIDIOUS BACTERIA

MH + 5% HORSE BLOOD + β-NAD

For AST disk diffusion antimicrobial susceptibility testing of fastidious microorganisms*.

Campylobacter, Pasteurella, Listeria monocytogenes, Corynebacterium, Haemophilus, Moraxella, pneumococci and other streptococci.

Reference	Kit/Format
43901	20 x 90 mm plates
43919	100 x 90 mm plates
43904	20 x 120 mm square plates

OTHER MEDIA FOR AST

FOR YEASTS AND MOLDS

RPMI

Specially formulated for antifungal susceptibility testing of yeasts and molds with the ETEST® strips.

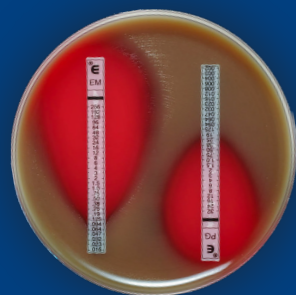
Reference	Kit/Format
421988	20 x 90 mm plates

FOR ANAEROBES

BRUCELLA BLOOD

MIC determination for anaerobic microorganisms using the ETEST® strips.

Reference	Kit/Format
411968	20 x 90 mm plates



ETEST® - ready-to-use reagent strips to determine on-scale MIC

bioMérieux media for antimicrobial susceptibility testing (AST) are validated for use with ETEST® strips. With a predefined, stable gradient of 15 antimicrobial concentrations, ETEST® provides MIC with greater precision for challenging situations (critically ill patients, fastidious organisms, MDRO's, etc..).

ETEST® is compliant with CLSI® (Clinical and Laboratory Standards Institute Inc.) & EUCAST® (European Committee on Antimicrobial Susceptibility Testing) guidelines.

GENbag and GENbox facilitate culture of bacteria that require anaerobic, microaerophilic or capnophilic atmospheres. This bacterial growth can be observed without opening either system.

GENbag

FOR INCUBATING FROM 1 TO 5 PLATES



GENbag ANAER

For anaerobic bacteria.

Reference	Packaging	Incubation
45534	20 units	Max 5 plates

GENbag MICROAER

For microaerophilic bacteria.

Reference	Packaging	Incubation
45532	20 units	Max 2 plates

GENbag CO2

For capnophilic bacteria.

Reference	Packaging	Incubation
45533	20 units	Max 2 plates

NOTE: each GENbag kit contains 20 bags + 20 gaz generators + 2 clip seals.

GENbox

FOR INCUBATING MULTIPLE PLATES



GENbox ANAER

For anaerobic bacteria.

Reference	Packaging
96124	10 units

GENbox MICROAER

For microaerophilic bacteria.

Reference	Packaging
96125	10 units

GENbox CO2

For capnophilic bacteria.

Reference	Packaging
96126	10 units

NOTE: each GENbox kit contains 10 gaz generators.

Accessories

Product	Reference	Packaging
Anaerobic indicator strips*	96118	50 units
GENbag clip seal**	45511	10 units

* strips indicating the correct anaerobic reaction completion.

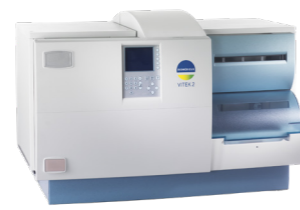
** plastic seal to close GENbag pouches - can be reused approx. 10 times.

GENbox 7 L / 2.5 L

Jars and lids for plates incubation.

Product	Reference	Packaging	Incubation
Jar 7 L	96128	1 unit	Max 42 plates
Lid 7 L	96130	1 unit	-
Jar 2.5 L	96127	1 unit	Max 12 plates
Lid 2.5 L	96129	1 unit	-

TAKE YOUR LAB'S EFFICIENCY TO AN EVEN HIGHER LEVEL WITH INCREASED AUTOMATION AND CONSULTANCY SERVICES



WASP®

Agile and flexible automated plate streaker for customizable urine protocol

High productivity for faster results

Up to 150 urine specimens/hour.

Continuous specimens & plates loading

Increase Pathogen Recovery Dedicated streaking protocols: patterns and inoculum (1 µL or 10µL).

VITEK® MS PRIME

Mass spectrometry system with superior workflow for faster ID results within minutes

Increased productivity

Up to 16 slides capacity. Automated continuous Load & Go.

Clinically relevant database

High-confidence IDs.

Fully integrated solution

Integrated with WASP®/ Colibri® for slide preparation. Integrated with VITEK® 2 for ID & AST results.

VITEK® 2

Automated susceptibility testing system for results in 5-8 hours

Comprehensive antibiotic menu

Specific UTI & MDRO cards.

Accurate MIC

Compliant with EUCAST® and CLSI® guidelines.

Optimized workflow

Continuous loading of VITEK® 2 AST cards.

Shortest hands-on time: 40-50% lower than other automated ID/AST systems.

Lab Analytics

Microbiology Data Management platform to collect, analyze & transform data into actionable insights

Fully integrated solution

All microbiology and AST results consolidated in place, including ETEST® strips.

Real-time alerts on MDRO and reporting on potential Hospital-Acquired Infections.

Advanced result rules-based expertise, to send the best info to the clinicians.

Optimized workflow

Identify bottlenecks and areas of improvement through dedicated data reporting tools.

TUBES AND TRANSPORT MEDIA



eSwab®

For nose, nasopharynx, throat, vagina, rectum, wound, fecal samples, and pediatric samples. Liquid Amies media with advanced stability, preservation and viability of all the organisms 48 hours at room and refrigerated temperature (24 hours for *N. gonorrhoeae*).

Reference	Packaging	Description
eSwab® 490CE.A TOP SELLER	50 x 1ml (pink cap)	Regular FLOQSwabs®
eSwab® 481CE	50 x 1ml (orange cap)	Mini-tip FLOQSwabs®
eSwab® 482CE	50 x 1ml (blue cap)	Nasopharyngeal FLOQSwabs®
eSwab® 483CE	50 x 1ml (orange cap)	Urethral FLOQSwabs®
eSwab® 484CE	50 x 1ml (blue cap)	Pediatric FLOQSwabs®
eSwab® 491CE.A	50 x 1ml (orange cap)	Mini-tip FLOQSwabs®
eSwab® 492CE03	50 x 1ml (pink cap)	Nasopharyngeal FLOQSwabs® + urethral FLOQSwabs® + regular FLOQSwabs®

FecalSwab™

For fecal and rectal samples. Modified Cary Blair media with advanced stability, preservation and viability of all organisms 48 hours at room temp and 72 hours at refrigerated temperature.

Reference	Packaging	Description
FecalSwab™ 470CE.A	50 x 2ml (green cap)	Regular FLOQSwabs®
FecalSwab™ FLOQSwab® 4E049S	50 x 2ml (orange cap)	FLOQSwabs® with a plastic ring marker on the shaft

UriSponge™

For urine samples. Boric acid-free formula with sponge to rapidly adsorb the correct amount of urine, ensuring the perfect ratio between urine and preservatives.

Reference	Packaging	Description
2E127S50.A	50 units	M40 & IVDR compliant

SL Solution™

For respiratory samples. Mucolytic agent for sputum samples for a quick liquefaction of sputum specimens. Preservation of microorganisms up to 6 hrs at room temp.

Reference	Packaging
OU019N	50 x 1ml

Enrichment broths (12X80mm tube with Screw Cap)

Type	Reference	Packaging	Description
BHI (Brain Heart Infusion)	474CE.A	50 x 3ml	Enrichment Broth™ for fastidious bacteria
Selenite Broth™	475CE.A	50 x 2ml	Selective and enrichment broth for <i>Salmonella enterica</i> spp and <i>Shigella sonnei</i>
Thiol Broth™	4U002N	50 x 4ml	Enrichment broth for facultative aerobic/ anaerobic microorganisms & obligate anaerobic microorganisms

Culture media in tubes covering most routine needs in microbiology workflow

bioMérieux's range offers quality for most routine testing needs in microbiology workflow. These ready to use culture media tubes may be used to revive, enrich, or isolate microorganisms or to control the purity of clinical strains.

- Manual or automated processes
- Various specimen types
- May be used to support longer incubation needs (will not dry out)
- Certificate of Compatibility available for bioMérieux instruments and reagents

BRAIN-HEART INFUSION (BHI) BROTH TOP SELLER

Growth of fastidious aerobic microorganisms.

Type	Reference	Packaging	Format
BHI	42081	20 tubes	9 mL
BHI + 0.1% AGAR	33803	20 tubes	9 mL

ESCULIN AGAR

Detection of esculin hydrolysis for presumptive differentiation of bacteria possessing this characteristic (e.g. *Enterococci*, *Listeria*, etc).

Reference	Packaging	Format
42086	20 tubes	Deep Agar

MUELLER HINTON BROTH

Non-selective medium for the cultivation of many microorganisms of various origins. The broth is for use with ETEST® strips for inoculum preparation and disc diffusion method.

Reference	Packaging	Format
AEB110699	100 tubes	10 mL



PEPTONE WATER

Growth of organisms that do not have any specific requirements and for the detection of indole production of bacteria possessing this characteristic.

Reference	Packaging	Format
42085	20 tubes	9 mL

PHYSIOLOGICAL WATER 0.85%

Reference	Packaging	Format
AEB110389	100 tubes	9 mL

RAPPAPORT BROTH

Medium for the enrichment of *Salmonella* in stool samples.

Reference	Packaging	Format
42091	20 tubes	9 mL

SABOURAUD CHLORAMPHENICOL 2 TOP SELLER

Selective medium for the culture of yeasts and filamentous fungi from polymicrobial specimens.

Reference	Packaging	Format
42038	20 tubes	Slanted Agar



SABOURAUD CHLORAMPHENICOL ACTIDIONE

Selective medium to culture filamentous fungi (particularly dermatophytes) from polymicrobial specimens.

Reference	Packaging	Format
42094	20 tubes	Slanted Agar

SABOURAUD GENTAMICIN CHLORAMPHENICOL 2

Selective medium for the culture of yeasts and filamentous fungi from polymicrobial specimens.

Reference	Packaging	Format
42031	20 tubes	Slanted Agar



SABOURAUD LIQUID BROTH

Culture or subculture of yeasts and molds and testing antimicrobial activity of pharmaceutical products.

Reference	Packaging	Format
42108	20 tubes	9 mL

SCHAEDLER BROTH TOP SELLER

Culture of anaerobic bacteria.

Type	Reference	Packaging	Format
0.02% Agar + Vit. K3	42097	20 tubes	13 mL
0.2% Agar + Vit. K3	42098	20 tubes	13 mL
Liquid Vit.K3	42106	20 tubes	13 mL

SELENITE-F TOP SELLER

Medium for the enrichment of *Salmonella* from stool specimens.

Reference	Packaging	Format
42099	20 tubes	9 mL

THIOGLYCOLLATE BROTH W/ RESAZURIN TOP SELLER

Non-selective enrichment of non-fastidious bacteria in human specimens and sterility testing.

Reference	Packaging	Format
42074	20 tubes	9 mL

TODD HEWITT BROTH + ATB

For the detection of group B streptococci in pregnant women and also for the enrichment of *S. aureus* within the scope of methicillin-resistant *S. aureus* detection.

Reference	Packaging	Format
42116	20 tubes	9 mL

TRYPICASE SOY

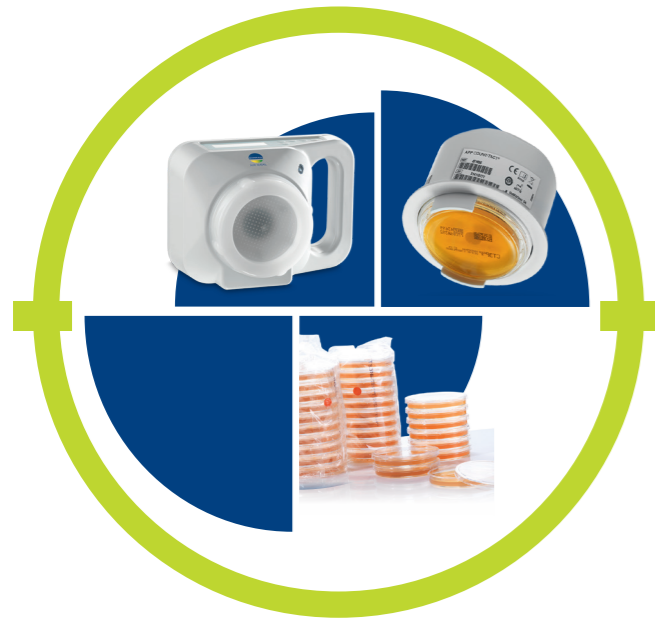
Growth of most non-fastidious microorganisms and microbiological control of non-sterile products in the pharmaceutical industry.

Reference	Packaging	Format
42100	20 tubes	9 mL

TRYPICASE SOY AGAR

Growth of most non-fastidious microorganisms and microbiological control of non-sterile products in the pharmaceutical industry.

Reference	Packaging	Format
42101	20 tubes	Slanted Agar



- Healthcare environments are liable to become contaminated with potential pathogens, many of which are now increasingly multi-drug resistant (MDR).
- Environmental contamination is as a reservoir for healthcare-associated infection (HAI).
- Microbiological environmental control are integrated in the arsenal of infection prevention and control measures.

AIR IDEAL® 3P®

Aerobiocollector Air Control device

- Detect viable organisms through air sampling with a simple, validated air circuit decontamination procedure
- Evaluate current levels and standards of hygiene and controls, plus select critical areas to establish reference and alert levels
- Lightweight (1.2 kg) with a smooth surface, easy for anyone to use

Reference
423154



COUNT-TACT® APPLICATOR

Applicator for easy, standardized application of COUNT-TACT® agar

- Check critical control points in protected areas to establish and/or revise microbiological surface monitoring
- Standardize contact surface sampling (time and pressure of exposure)
- Remove variability between technicians

Reference	Description
421895	COUNT-TACT® applicator
421160	APP LOCKSURE3P™



Culture media for environmental monitoring

Irradiated media for use in protected areas (e.g. biosafety cabinets & operating rooms)

Manage storage and inventory with maximum convenience

- Flexible storage between 2 - 25°C
- Long shelf-life

Unique LOCKSURE® (90 mm) closure system

- Secure samples during critical transport and incubation steps
- Quick and intuitive with single locking position
- Ensures ideal incubation conditions
- No need for additional parafilm or adhesive tape wrapping of plates



Product Name	Reference	Packaging	Description
COUNT-TACT® Agar	43501	20 x 55 mm plates	For monitoring surface biocontamination in hospitals.
COUNT-TACT® Sabouraud Dextrose with neutralizers	43812	20 x 55 mm plates	Triple-wrapped irradiated medium for the monitoring of yeast and mold biocontamination in hospital cleanrooms, with neutralizing agents to inactivate any residual disinfectants present on the surface.
Irradiated Sabouraud Dextrose 3P® with neutralizers - LOCKSURE® system	43814	20 x 90 mm plates	Triple-wrapped irradiated medium for monitoring microbial contamination in hospital cleanrooms with neutralizing agents to inactivate any residual disinfectants present on the surface.
Irradiated Trypcase Soy Agar 3P®	43711	20 x 90 mm plates	Triple-wrapped irradiated medium for monitoring microbial contamination in hospital cleanrooms.
Irradiated Trypcase Soy Agar 3P® with neutralizers - LOCKSURE® system	43169 43811 43819	100 x 90 mm plates 20 x 90 mm plates 100 x 90 mm plates	With neutralizing agents to inactivate any residual disinfectants present on the surface.
BCYE with L. cystein	422231	20 x 90 mm plates	To confirm/exclude the presence of <i>Legionella</i> in water by subculture of typical colonies obtained previously using <i>Legionella</i> GVPC medium.
BCYE without L. cystein	422230	20 x 90 mm plates	To be inoculated at the same time as 422231.
GVPC	43031 43032	20 x 90 mm plates 100 x 90 mm plates	Enumeration of <i>Legionella</i> in water.
R2A	43551	20 x 90 mm plates	Enumeration of viable aerobic microorganisms in water.

**SAMPLES. PATHOGENS. DECISIONS.
CULTURE OF CONFIDENCE.**

CULTURE MEDIA CATALOG

D I S C O V E R N O W



Product availability varies by country. Consult your local bioMérieux sales representative.

bioMérieux S.A. • 69280 Marcy l'Étoile • France • Tel.: + 33 (0)4 78 87 20 00 • Fax: +33 (0)4 78 87 20 90
www.biomerieux.com • www.biomerieux-diagnostics.com