

BIOMÉRIEUX

# WASPLab<sup>®</sup>

EMPOWERED BY BIOMÉRIEUX

More than just automation... It's about your uniqueness.



PIONEERING DIAGNOSTICS

# WASPLab<sup>®</sup>

EMPOWERED BY BIOMÉRIEUX

**More than just automation...**  
It's about your uniqueness.

How does your lab achieve top **productivity** while ensuring high level of **quality**? The answer is your way. WASPLab<sup>®</sup> is the **flexible** automated specimen processing and reading solution that adapts to your unique lab setup and workflow.

- Ultimate flexibility and agility fits your specific lab needs – and even grow with you over time
- Workflow at the heart – never an afterthought
- Straightforward deployment
- Leverage integration with VITEK<sup>®</sup> solutions
- End-to-end support – only when empowered by bioMérieux



# WASPLab<sup>®</sup>

EMPOWERED BY BIOMÉRIEUX



FULL-SERVICE INTEGRATION

4

SAMPLE MANAGEMENT

6

WASP<sup>®</sup>

8

INCUBATION

12

IMAGING SYSTEM

14

CULTURE MEDIA

16

PhenoMATRIX<sup>®</sup>

18

PICKING & ID&AST  
PREPARATION

20

CONNECTIVITY

22

BIOMÉRIEUX  
LAB CONSULTANCY

24

FULL AUTOMATION

26

CUSTOMER SUPPORT  
SERVICES

28

# FULL-SERVICE INTEGRATION

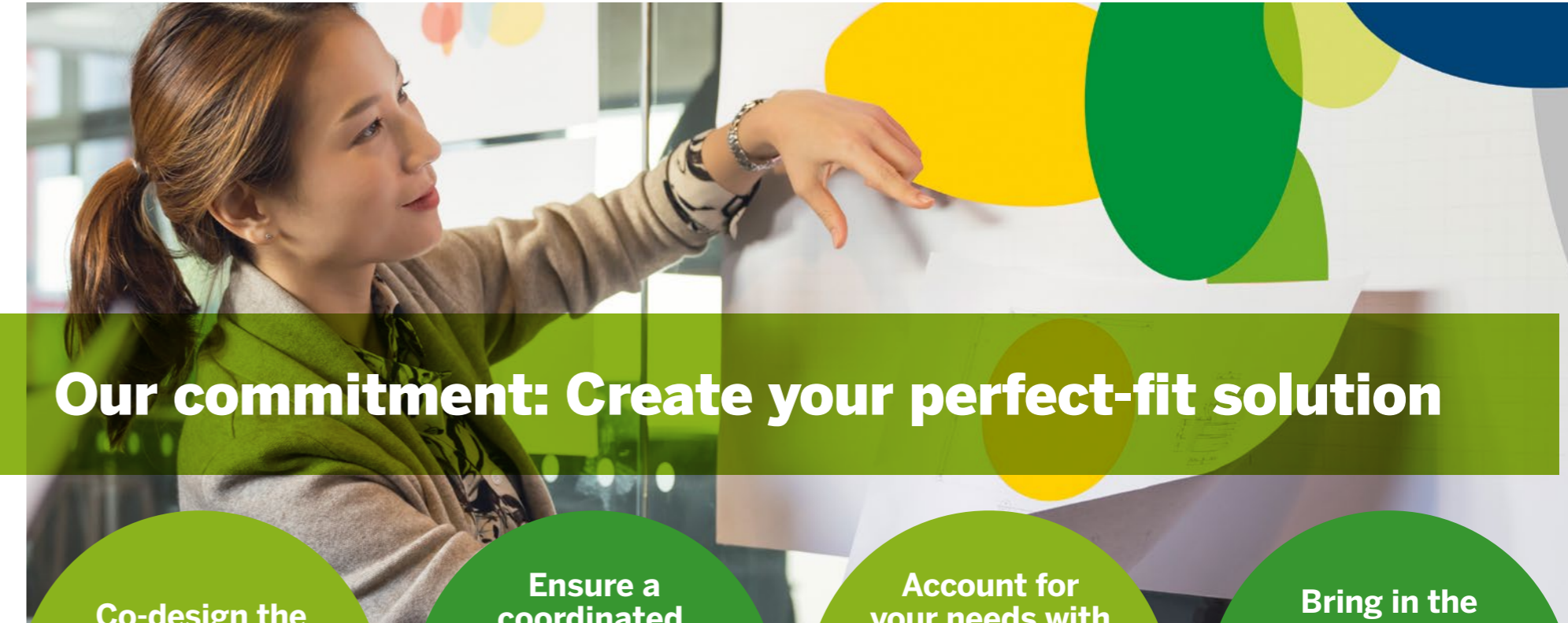
We're a team  
from project  
start to finish!

Integrating WASPLab® is a critical step in meeting new, **ever-growing productivity and quality challenges**. That's why we work with you to gain a global vision of your needs and develop **flexible solutions**. A dedicated bioMérieux project manager works onsite with you in a team approach to implement WASPLab® specifically adapted to your needs. **It's all about your uniqueness.**

Personalized approach to ensure top productivity and quality.

- Dedicated bioMérieux project manager onsite to collaborate in all steps
- Interaction with all stakeholders to account for all perspectives and needs
- Joint planning for implementation of new processes
- Physical implantation of the systems in your laboratory
- Recommendations and training to ensure regulatory compliance are met

# PERSONALIZED FOR FLEXIBLE SOLUTIONS



**Our commitment: Create your perfect-fit solution**

Co-design the offer that's right for you



Ensure a coordinated, inclusive decision process



Account for your needs with realistic timeline planning



Bring in the right skills at the right moment



# LIQUID BASED MICROBIOLOGY

# MEETING YOUR SAMPLE COLLECTION CHALLENGES

## PUT IT TOGETHER WITH WASP®: GO FURTHER

LBM® ESwab® is the only liquid-based system that is validated both for manual methods and **for use with the WASP® specimen processor**.

With a unique open-platform system, WASP® automates most aspects of microbiology specimen management. **When you use LBM® for processing with WASP® you boost your lab efficiency even further:**

- **Streamline workflow using same tubes** for manual and automated microbiology
- Easily ensure safety, standardization & traceability **throughout process**
- **Use same tubes** for several tests (Culture, GRAM staining, molecular biology, direct fluorescent antibody)

## WORKFLOW FROM COLLECTION TO RESULT

**LBM® and WASP® are designed for optimal workflow** – your way. Use straightforward techniques with universal tubes to ensure standardization and traceability.

Get your samples to the lab in optimal condition, ensure standardization and be confident in your results - regardless of sample types and testing methods.

**LBM®  
COLLECTION  
TRANSPORT  
PRE-TREATMENT  
ENRICHMENT**



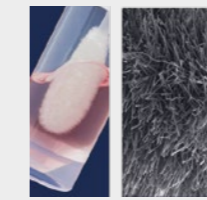
## LBM® TECHNOLOGY = COMBINATION OF FLOQSWABS® & LIQUID MEDIA IN A STANDARDIZED CONTAINER

### LBM® collection & transport devices\*



eSwab®, FecalSwab®, LBM® SLsolution™, BC+™...  
Liquid-Based Microbiology™ broths

- One sample – many test
- High sample flexibility
- Same collection devices for most of the applications (culture, Gram stain, antigen detection, and molecular assays)
- Ready to be processed manually and designed for WASP®
- Compatible with NAAT
- Best preservation of bacteria viability



FLOQSwabs®

- Superior performance versus traditional swabs, FLOQSwabs® allows rapid absorption and ensuring fast elution of more than 90% of the sample.
- Designed for multiple collection sites. Various shaft and tip dimensions made FLOQSwabs® a well-tolerated alternative to invasive and costly collection procedures in many anatomical site

### Positive blood culture processing device



Tube with calibrated vacuum action used for transferring blood culture samples to WASP®.

BC+™ (Ref. 2U026S)



### For the collection, transport and preservation of urine specimens Urisponge™



### Sample pre-treatment

For the rapid liquefaction of sputum specimens: SLsolution™



SL Solution OE006N.A/Sputum Dipper sterile 096CS01

### UNIQUE FLOQSwabs® TIP TECHNOLOGY



Traditional fiber swabs: the sample stays entrapped in the fiber wad



FLOQSwabs® have no inside: the sample is instantly and entirely released

### Selective & enrichment broths



### A full range of enrichment and selective broths for the most common aerobic and anaerobic bacteria:

Liquid-Based Microbiology™ broths



For aerobes, anaerobes, fastidious bacteria, and yeasts & molds eswab® with the picture



For the collection of rectal swabs and fecal specimens of enteric pathogenic bacteria: FecalSwab® and the picture

\*In compliance with CLSI M40-A CLSI regulations. *Neisseria gonorrhoeae* survival is 24 hours.

# WASP® EMPOWERED BY BIOMÉRIEUX

WASP® (Walk-Away Specimen Processor) is an automated streaking system that can be upgraded to WASPLab®. Therefore WASP is your first step for your lab automation journey. This automated system is agile and flexible with a unique open-platform, type modular system – together we can design the WASP® that perfectly adapts to your WASPLab®.

WASP® addresses **the several aspects of automated pre-analytic microbiology specimen processing.** You gain an optimized solution when you combine WASP® with services available only through **WASP® empowered by bioMérieux.**

## TIME SAVINGS

- Redeploy skilled staff: high autonomy, requires less user intervention
- High productivity (24/7 operation possible)
- Continuous loading and random access

## COST SAVINGS

- Fewer consumables
- Start with only what you need; modular options to grow with your needs

## SAFETY & QUALITY

- High standardization and traceability
- Safety for the specimen and the user with individual specimen management, Hepa filter and camera control

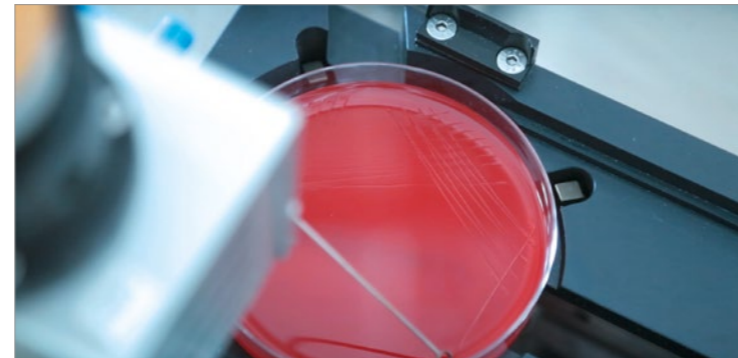
## FLEXIBILITY

WASP® offers a **uniquely flexible approach** to automated streaking:

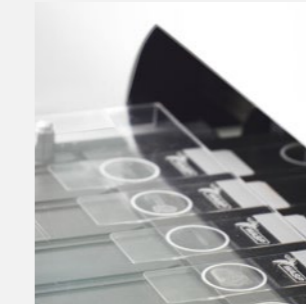
- Versatile protocol options and familiar streaking patterns
- Capacity for various sample sizes with forums of 1 µl, 10µl and 30µl
- Adapts to your lab with minimal staff retraining

## STANDARDIZATION

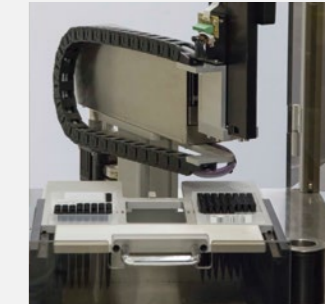
- Getting the maximum of your WASP starts with the samples collection with LBM®
- Efficient streaking thanks to large streaking pattern library



WE ADAPT TO YOU.  
YOU DON'T HAVE TO ADAPT TO US.



**AUTOMATED  
GRAM SLIDE  
PREPARATION**



**PIPETOR  
MODULE  
from 10 µl - 900 µl**



**AUTOMATED  
BROTH  
PREPARATION**



**URINE  
TURNTABLE**



**ANTIBIOTIC  
DISC DEPOSIT  
SYSTEM**

# WASP® EMPOWERED BY BIOMÉRIEUX

WE ADAPT TO YOU.  
YOU DON'T HAVE TO ADAPT TO US.

## AUTOMATED GRAM SLIDE PREPARATION



- Inoculation of glass slides for Gram stain testing
- Barcoding, barcode reading & reconciliation
- Traceable & consistent slide prep

## PREVI® COLOR GRAM Improved Standardization by combining with WASP® Gram Smearing Module



- Standardized routine for quality & reliable result of Gram staining
- Traceability, level monitoring & Program customization
- High throughput with up to 30 slides in 6 min
- Ease of use, closed & safe system with low reagent consumption
- Safe laboratory, Green & clean

## AUTOMATED BROTH PREPARATION



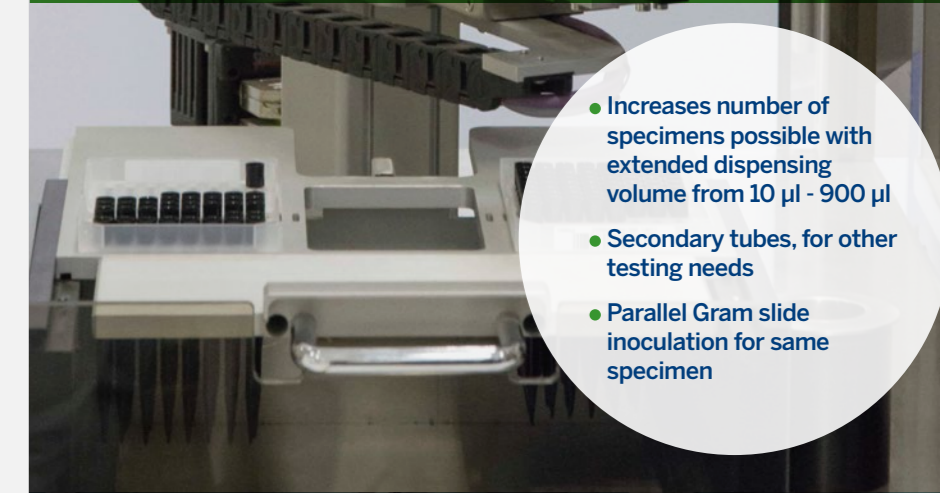
- Up to 48 broth tubes
- Smooth standardized processing
- Automated labelling and traceability

## URINE TURNTABLE



- Continuous loading of large screw cap containers
- Random access management

## PIPETTOR MODULE



- Increases number of specimens possible with extended dispensing volume from 10 µl - 900 µl
- Secondary tubes, for other testing needs
- Parallel Gram slide inoculation for same specimen

## ANTIBIOTIC DISK DEPOSIT SYSTEM



- Up to 4 dispensers available
- Regular spacing of disks for no contamination risk

# WASPLab® SMART PLATES INCUBATORS

Intelligent plate management takes over repetitive tasks to free technicians up for value-added activities. Within the unit, it automates entire incubation and imaging phases, according to your protocols.

## IMPROVED UPSTREAM WORKFLOW

- Excellent thermal conductivity to reach optimal temperature and atmospheric conditions rapidly
- Switch between CO<sub>2</sub> and O<sub>2</sub> according to your needs
- Uniform, stable conditions for improved colony growth

## FLEXIBLE STORAGE CAPACITY

- Single (795 plates)
- Double (1590 plates)

## LESS MANIPULATION BY TECHNICIAN

- Time savings: Random access retrieval of individual plates
- Improved safety with barcode-based individual plate position

## EASY MANAGEMENT AND MAINTENANCE

- Compact, modular incubator shelves, easy to remove for autoclaving

# MANAGEMENT THAT FREES TECHNICIAN TIME





# WASPLab® IMAGING SYSTEM

It's like using a plate microscope with every plate. The WASPLab® imaging technology uses a highly sophisticated lighting and camera system to **make each plate image clear and accurate** for review and picking procedures. This is made possible through:

## ADVANCED MEDICAL VALUE

- Detect growth not seen by naked eye on the actual plate
- Improve the presumptive identification of colonies with a high segregation of color shades

## SECURITY FOR TECHNICIANS AND SAFETY FOR THE SPECIMEN

- No handling of plates
- HEPA filters to protect the imager environment

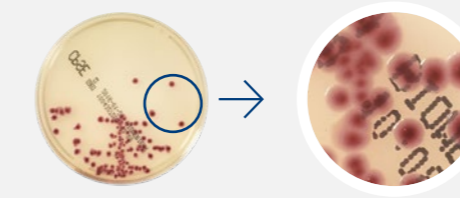
## STANDARDIZATION

- Full traceability of the plates images related to one specimen



# MORE THAN THE EYE CAN SEE

## High resolution and microscopic zoom



- Resolution 48 megapixels for more accurate work-up decisions
- Microscopic zoom Up to 13X
- Colonies even smaller than 1 mm are visible

## Perfect chromatic response

- Trilinear sensor Camera
- Multiple shots for one image
- Compose 3 images to simulate all colors

## Wide focus depth

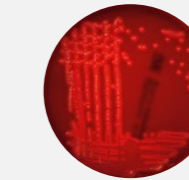
- Enables a tolerance of +/- 4.5mm in the height of the agar and the colony
- All colony views are crystal clear – no matter the agar thickness



## Different light techniques



- **FRONT LIGHT WITH WHITE PANEL**
- Shows a realistic view of the plate – as if it was in your hand



- **BACK LIGHT**
- Uses transparency to show the hemolysis

## Plate mapping and prevention of image distortion

- Align images on the screen for picking and perfect image

# CHROMID® BY BIOMÉRIEUX

The most extensive range of chromogenic media for the simultaneous culture and identification of micro-organisms. Combined with PhenoMATRIX® expert system, the CHROMID® range improves patient management by reducing time to result.

## TIME SAVINGS

Depending on the pathogen detection:

- Earlier growth detection than conventional media
- Limited number of confirmatory tests
- Final reading at 18/24 hours
- Early protocol CPSE

## STREAMLINED WORKFLOW

**Thanks** to direct identification of pathogens with controlled and sustainable costs  
Detection of resistance mechanisms with a limited number of confirmatory tests

## CHROMID® FOR ADDED MEDICAL VALUE

Media designed for improving pathogen detections:

- Dedicated media implementation to better recover pathogens in respiratory samples of cystic fibrosis patients
- Reduced acquisition of healthcare associated infections to sustain antibiotic efficacy for future generations
- Dedicated MDRO Multiplates protocol improving the diagnostic of associated resistance (eg BLSE/CRE) by reading different plates from the same sample on the same screen

# CULTURE OF CONFIDENCE



- **CHROMID® Candida** with direct identification of *C. albicans* in only 24 hours compared to Sabouraud agar.

- **CHROMID® MRSA SMART** same sensitivity at 24 hours as other chromogenic media at 48 hours.

- **CHROMID® S. aureus Elite** with direct identification of *s. aureus* on CHROMID®

- **CHROMID® CPS® Elite**: no bench test needed for *E. coli* identification
- **CHROMID® CARBA, CHROMID® CARBA SMART & CHROMID® OXA-48** range with a sensitivity more than 95%
- **CHROMID® Colistin R**: 2 claims resistance screening and alternative method to BMD alternative method to Broth Micro Dilution

- **CHROMID® Strepto B** for the detection of GBS: haemolytic and non haemolytic strains of Group B *Streptococci*
- **CHROMID® VRE** detection of *vanA* & *van B* *Enterococci* in 24 to 48 hours
- **CHROMID® MRSA & CHROMID® MRSA SMART** design for the detection of *meC A* and *meC C s. aureus*
- **CHROMID® Salmonella Elite** detection of all *Salmonella* including *S. Typhi* and *S. arizonae*

INCREASE  
EFFICIENCY  
& WORKFLOW

# PhenoMATRIX® EMPOWERED BY BIOMÉRIEUX

Adding PhenoMATRIX® expert system brings WASPLab®'s **intuitive** automation and embedded algorithms to the next level. **By integrating LIS data**, you improve interpretation and rules-based sorting. You're empowered to deliver even more rapid, actionable results.



## INCREASE EFFICIENCY & FASTER INTERPRETATION

### Time savings

- Overall efficiency: **More samples processed faster no additional staffing**
- **Earlier growth detection**
- **Less plate reading time** through:
  - Automatic sorting of negative samples; automatic discarding based on rules
  - Automatic sorting of positive results for further interpretation
  - Automatic selection of relevant isolated colonies
- Designed to optimize the **Colibrí productivity**

### Optimum Quality, Safety and Standardization

- Safe decision with **expert system**
- Never touch a negative plate
- **Focus on plate with clinical interest:** Algorithms improve sensitivity and specificity
- **Improved bacterial growth** through defined, uninterrupted incubation times **Increased Reproducibility & Traceability**
- **No variability** of human interpretation
- Bi-directional connection with LIS for traceability



## ONLY WHEN EMPOWERED BY BIOMÉRIEUX

**When you choose WASPLab® and PhenoMATRIX® empowered by bioMérieux, you gain benefits like:**

**Fully-supported technical integration:** Get help defining rules for your unique needs and challenges, as well as **training and ongoing support.**

**Exclusive bioMérieux Lab Consultancy services:** Helping you unlock WASPLab®'s power, prepare your team and ensure **effective change management.**

**Validated compatibility with CHROMID®:** chromogenic plated media: Optimal media for WASPLab® algorithms and PhenoMATRIX®.

**A true partner:** We combine **bioMérieux Microbiology expertise** with **COPAN innovative mindset** to develop new offers that **improve both efficiency and medical value.**

- ➔ **CHROMID® CPSE RTTR new protocol** allowing 8 hours Faster Time to results in comparison to the standard routine urine workflow with a **high recovery rate of E. coli on CHROMID® CPSE.**
- ➔ **MDRO Multi-plates management**
  - Gain of time in the classification and sort out of plates
  - **Improvement of the diagnostic of associated resistance** (eg BLSE/CRE) by reading plates from the same sample in the same page
  - Gain in the **patient's management** → Isolate MDRO colonized patient.

# EMBEDDED INTERPRETATION INTELLIGENCE FOR WASPLab®

## You set the rules

**PhenoMATRIX® saves you time by consolidating information about each sample:**

**1. User-selected WASPLab® patented algorithms for analysis and sorting.**

**2. LIS\* and clinical context:** Integration of other information such as demographics, clinical signs, other test results, etc.

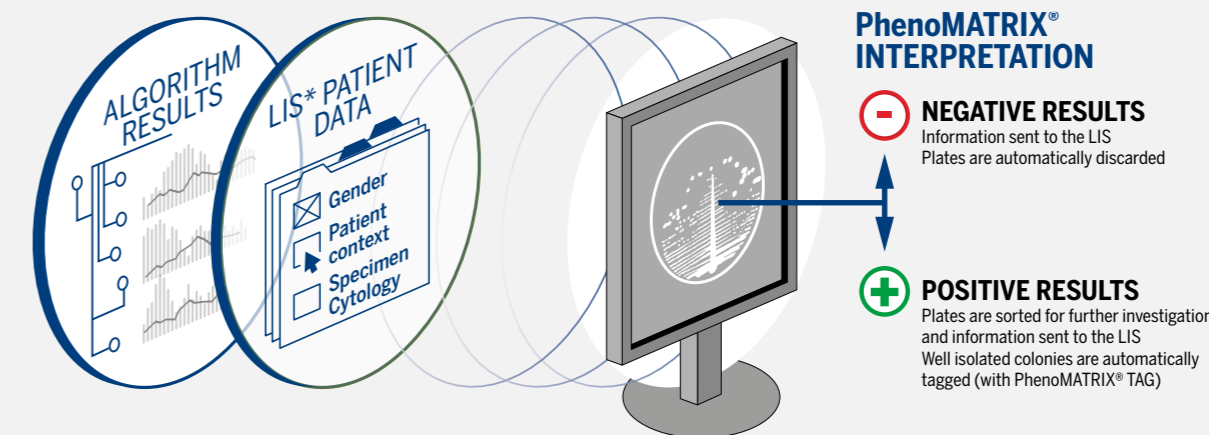
**This data is interpreted by PhenoMATRIX® according to user-defined rules**

Based on your needs, apply defined rules to rapidly sort and determine how each plate is analyzed and interpreted. For example:

- **Negative plates**
  - Automatically discard
  - Continue incubation without opening incubator, if needed
- **Positive plates**
  - Automatically sort for further, specific analysis as required



**PhenoMATRIX® TAG automatically selects the well-isolated colonies and assigns D1 tasks (ID, AST, ID+AST) to be processed by Colibrí™.**  
**PhenoMATRIX® PLUS allows the automatic release of the plates for urine samples without any user validation.**



\*LIS: Laboratory Information System

# Colibri™ EMPOWERED BY BIOMÉRIEUX

Are skilled technicians in your lab spending too much time on picking? Now, with Colibri™, you can automate and **standardize picking** for integration with ID\*&AST\*\* – saving time and improving quality of results. Colibri™ picks colonies based on digital coordinates specified by the WASPLab® imaging system.

## TRACEABILITY AND STANDARDIZATION

Colibri™ allows full traceability increasing quality and standardization of ID&AST sample preparation for VITEK® solutions.

- Colony picking for spotting on VITEK® MS targets for ID and VITEK® 2 suspension preparation for AST
- Samples and target data sent directly to VITEK® instruments

## ACCURACY

Colibri™ accuracy in the detection of colony positions and dimensions ensures a remarkable level of repeatability and reliability.

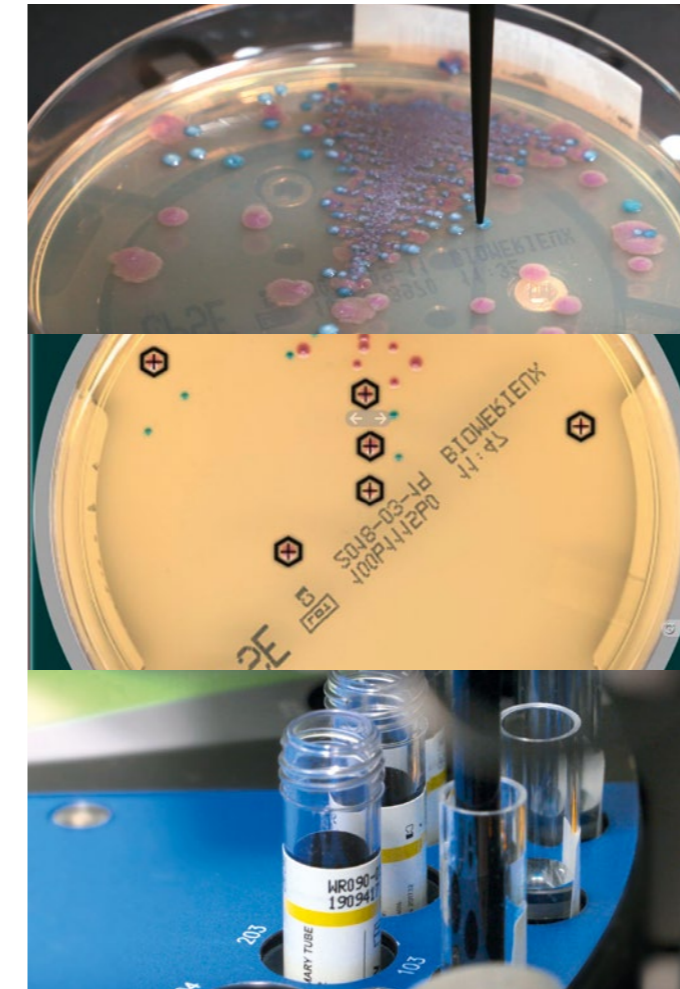
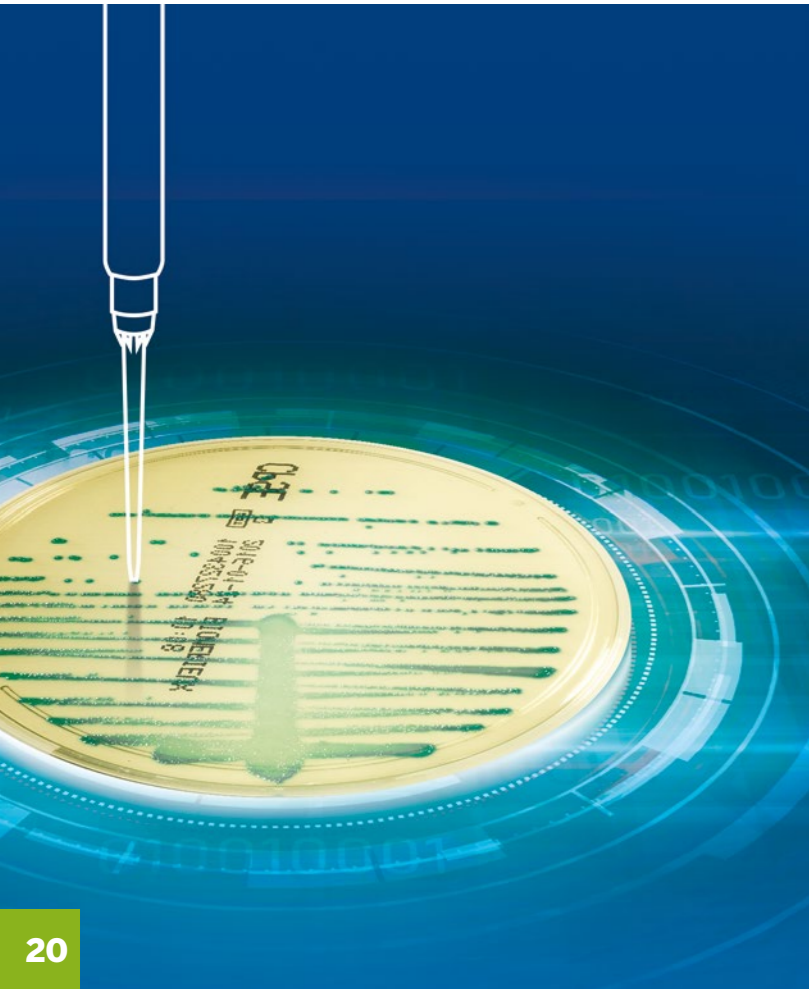
- Three cameras and a laser for accurate detection of colony positions and dimensions
- Repeatability and reliability through automation

## EFFICIENCY

- Only when empowered by bioMérieux, experience a unique integration of Colibri™ with VITEK® solutions and CHROMID® chromogenic media for a high efficiency and a focus only on difficult samples.

\*ID = Identification  
\*\*AST = Antibiotic Susceptibility Testing

# AUTOMATED COLONY PICKING SYSTEM FOR WASPLab®



AUTOMATED PREPARATION FOR ID&AST



# IT SOLUTIONS

**Smooth integration of IT and connectivity** to the lab network is critical ensuring that your automated system is **optimized for efficient workflow** based on your **unique** way of working. When you choose WASPLab® empowered by bioMérieux, you can count on **start-to-finish support** for integration into your existing LIS, middleware and lab instruments.

## FULL AND SMOOTH CONNECTIVITY WITH YOUR LIS

- bioMérieux's project team will manage the interactions between LIS provider, your IT specialist & bioMérieux experts to facilitate exchanges and integration. Combining microbiology and IT expertise we ensure the final solution successfully adapts to your specific lab informatics needs.

## FULL INTEGRATION WITH THE LAB NETWORK FOR D1 ACTIVITIES

- The WASPLab® interface can be equipped with the plugin C-tracer that assists technicians in performing D1 activities for each isolate, from colony selection, to ID&AST test.
- Optimized for use with bioMérieux's VITEK® MS PRIME and VITEK® 2, C-tracer guides the lab's procedures and tracks all ID&AST data for full traceability.

# INTEGRATE SEAMLESS CONNECTIVITY

**VITEK® 2** **VITEK® MS PRIME** **LIS** **MAESTRIA™**

**WASPLab®**

**+**

**VITEK® 2** Vitek2 Cassette Id 123 PREPSTATION1  
Sample Barcode: 241411  
Card Id: 0442999103170603  
AST-N002 (S-)  
Tasks Done: Vitek2 ID+AST (BMX) To-Do Tasks: Vitek2 A  
Previous Step Next Step Remove Ext.Card  
1 2 3 4 5 6 7 8 9 10 11 12 13 14 15  
On cassette position 5 prepare an tube with the strain 241411  
On cassette position 6 prepare an empty tube and a Vitek2 card for AST for the strain 241411  
On cassette position 7 prepare an empty tube and a Vitek2 card for AST for the strain 241411  
Cassette Time 176H :26:05 - EXPIRED

14  
Staphylococcus aureus  
13) Vitek2 AST (BMX)  
(Bacteria)

# BIOMÉRIEUX LABCONSULTANCY

Challenge Yourself. Consult with Us. Transform Together.

Accompanying your WASPLab® integration with BIOMÉRIEUX LAB CONSULTANCY ensures every member of your lab reaps maximum benefits, with **trustworthy, impartial expertise**.

## FLEXIBILITY

- Unique combination of microbiology knowledge and excellence in leading business performance methodologies
- Foster a collaborative work environment that ensure a sustained continuous improvement
- Optimize the use of your resources : *people-process-technology*, while increasing your productivity

## PARTNERSHIP

- Transform your routine challenges into daily performance excellence using proven methodologies applied in a microbiology context
- Holistic service from start to finish. We “roll up our sleeves” and work by your side



Together,  
we transform as  
much or as little  
as you need,  
when you need it.  
Partnership means  
we are always here  
for you.

>600  
CONSULTANCY  
SERVICES PERFORMED  
>30 COUNTRIES

# BECAUSE THE HUMAN TOUCH IS THE MOST IMPORTANT PART OF TECHNOLOGY

Let's **transform your laboratory together** to enhance the use of WASPLab® and complementary technology, improve workflow and processes, and make the most of staff skills.

## MICROBIOLOGY WASPLab® DIAGNOSIS

*Partner with us to envision the optimal WASPLab® for your lab*

- Together we analyze your current situation in terms of workflow, workload, technology, layout, time and cost savings
- You receive a personalized plan for optimizing WASPLab® integration:
  - Configuration
  - Resource use/needs, workflow
  - Planning adapted to your pressures
  - Time and cost savings estimations
- This report offers critical information for your go/no-go decision-making

## WASPLab® DISCOVERY SOLUTION

*Maximize the potential of your WASPLab® by ensuring staff full engagement*

- We assess & identify the actors and areas impacted
- Understand, address points of resistance & doubts
- Explore the key WASPLab® functionalities
- Practice automation-enabled workflow
- Envision & experience positive impact on each technician role
- Includes WASP® optimized integration service

## WASP® OPTIMIZED INTEGRATION

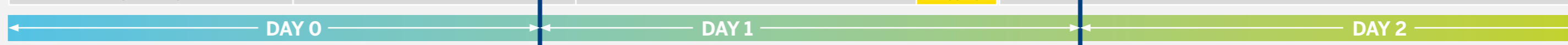
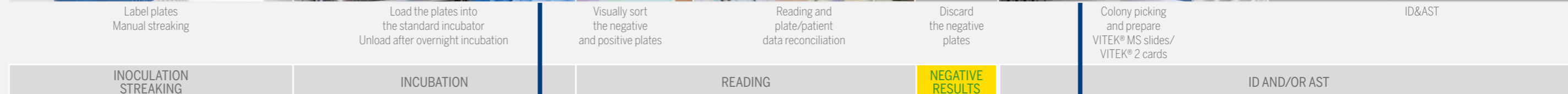
*Ensure smooth integration into your existing workflow*

- Optimize WASPLab® integration by on-boarding the team to make the most of automation
- Help staff design new processes, motivating them to adapt and adopt
- Establish transformation goals, conduct improvement events and measure pre-and post-event KPIs
- Motivate and empower staff to ensure lab success becomes a team effort

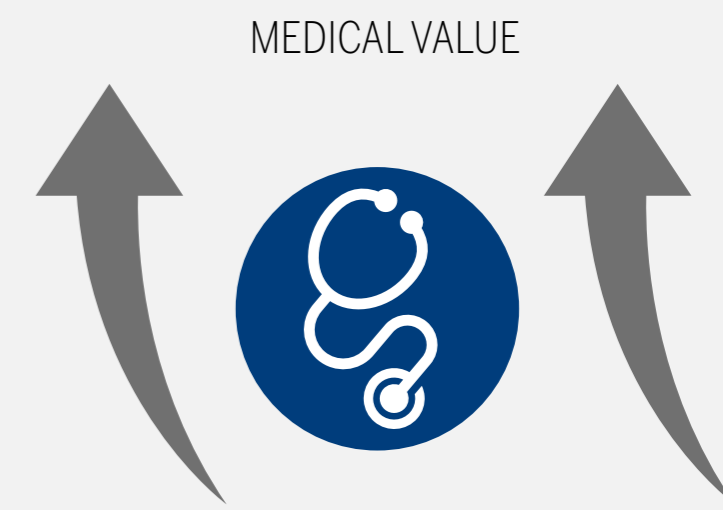
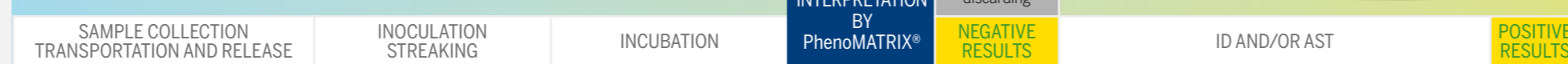
# FULL LAB AUTOMATION WORKFLOW

**Saving  
your time**

## Without PhenoMATRIX®



## With PhenoMATRIX®



Illustrative. Time workflow depends on your specific lab configuration and protocols.  
\* ID&AST: identification and susceptibility testing.

# LAB SERVICES

Your lab is constantly challenged to deliver reliable results ever-more rapidly. To achieve top productivity and deliver the best patient outcome, bioMérieux customer support helps you :

## MAXIMUM PERFORMANCE

We keep your lab running at maximum efficiency

- True accompaniment on site with trained experts to make the best start (Project Management connectivity...)
- Technical support (online and onsite) with remote monitoring solution (VILINK®)
- Automotized supply process to gain efficiency (Automatic Stock Replenishment, Express delivery...)

## SUSTAINABLE QUALITY

We invest in your staff to deliver a sustainable quality

- Verification package to meet ISO 15189 – CAP/ CLIA quality expectations
- Tutorials and trainings to gain expertise at your own pace (Presential or distancial)
- Track your order and follow your KPI's live (Order and T°c tracking, Monolot delivery...)

## FLEXIBILITY

We partner with you to determine which service agreement best suits you as a baseline

- Tailored contracts with INSTRUMENT CARE services
- Knowledge and skills improvement with Training & Education offer
- Quality and Compliance accompaniment with verification package to meet quality expectation

# KEEP YOUR LAB RUNNING AT OPTIMAL PERFORMANCE



## TAILORING SERVICES TO YOUR SPECIFIC NEEDS



**COMPREHENSIVE CARE**  
WASPLab® + Colibr™

**PREMIUM CARE**  
WASPLab® + Colibr™

**WITHOUT CONTRACT**  
On demand service

### CORE OFFER

#### START UP

- Installation & Connection	●	●	INCLUDED
- Operational qualification	●	●	
- Training routine	●	●	

#### HOTLINE & REMOTE CONTROL

- Hotline bus. Hours	●	●	INCLUDED
- Remote diagnostic through VILINK®	●	●	
- Remote repair (nb ticket/year, nb user)	● Ticket	● Unlimited	Billable (On demand Price)
- Hotline extended hours	○	● 6/7, 7/7, 24/7	
- Report of exchange	○	●	

#### PREVENTIVE MAINTENANCE (PM)

- PM (labor) business hours & PM kit	●	●	Billable (On demand Price)
- Software updates & upgrades	●	●	
- PM scheduling @cust. Convenience	○	●	
- IT obsolescence / PC Replacement	○	●	

#### REPAIR

- Repair (Labor) bus. hours + Spare Parts	●	●	Billable (On demand Price)
- Responsiveness DAY+1 (24h)	●	●	
- Spare Parts @customer site/nearby	○	●	
- Extended hours intervention	○	● 6/7, 7/7, 24/7	
- Business Continuity plan	○	●	
- Intervention report	○	●	

● INCLUDED  
○ Configurable / Optional





Manufactured by  
Via F. Perotti 10 • 25125 Brescia • Italy

**Copan**

Distributed by  
bioMérieux S.A. • 69280 Marcy l'Etoile • France • Tel.: + 33 (0)4 78 87 20 00 • Fax: +33 (0)4 78 87 20 90  
[www.biomerieux.com](http://www.biomerieux.com)